

2020-2021 ACADEMIC YEAR



MARGOLIN HEBREW ACADEMY
FEINSTONE YESHIVA OF THE SOUTH



CAMPUS
REOPENING PLAN



WELCOMING OUR STUDENTS BACK TO THE BUILDING

MHA-FYOS is preparing for the first day of school on Wednesday, August 19 and we look forward to seeing your children soon! Given the uncertainty of the COVID-19 pandemic, details of our reopening plan are being updated and revised regularly as guidance and conditions change. Any significant changes will be communicated to you by email and updated on our webpage.

CAMPUS REOPENING PLAN

In planning for our school's reopening, we are balancing three objectives:



PHYSICAL SAFETY

The physical safety of our students, teachers and school community is of paramount importance. The combination of cleaning, disinfecting, use of face coverings, physical distancing and the creation of cohorts provide some of the most practical safeguards for being on campus.

EDUCATIONAL GROWTH

Virtual instruction can be an effective platform to teach - particularly for older students. However, consistent, in-person, face-to-face learning is far superior to virtual instruction.

EMOTIONAL HEALTH AND WELL-BEING

The structure of the school environment and its positive social connections and professional resources - including teachers, counselors and administrators - support the emotional development of our students.



In striving for these three objectives, we aim to open school as safely as possible. We recognize that the best ways to limit the spread of coronavirus include cleaning, disinfecting, social distancing, wearing a face covering, being in outdoor spaces when possible and limiting interactions to others and within a defined cohort, whenever possible.

Our Chachamim teach Kol Yisrael Arevim Zeh La'zeh - all Jews are responsible one to another. This teaching admonishes each of us during this pandemic to prevent the spread of this coronavirus. In the interest of your children's health, your own health, your children's teachers' health and the health of your family and community, please wear face masks when in public, maintain a social distance of six feet and sanitize your hands regularly. Please teach your children and the members of your household to do the same. By doing our part, we will all support each other in protecting the health of ourselves and our community.

OUR PLAN IS BUILT ON THREE FOUNDATIONS.

Foundation #1:

In order to mitigate risks to health and safety, MHA-FYOS has created and will continue to update and revise protocols and plans in order to respond to the latest guidance and the current level of viral transmission in the community.



MHA-FYOS CAMPUS REOPENING PLAN FOUNDATION 1:

As an independent school, MHA-FYOS may choose to follow the decisions of public or other private schools but we have the right to make the best decisions for our school community. Based on our school community context and in consultation with expert medical guidance, relevant government authorities and local leaders, our school has created protocols and plans to mitigate health and safety risks to our students, faculty and school community.

To monitor the changing landscape and respond quickly, the Head of School created a re-opening team that is responsible for our preparations, safety mitigations, and details of reopening. When school resumes in August, this team will continue to monitor and track the safety of the campus and the health of the students, faculty, and staff.

We began preparing to open Camp Shemesh on June 15. We opened camp on June 29 in accordance with guidance from medical consultants with Infectious Disease and COVID-19 expertise, including Dr. Aaron Glatt (Chief of Infectious Disease at Mt. Sinai Hospital, South Nassau) and the CDC. We consulted with the State of TN Department of Education and the rabbis of our local Va'ad.



MHA-FYOS CAMPUS REOPENING PLAN

FOUNDATION #1:

The protocols and procedures that we will employ for the upcoming school year are based on our experience running two sessions of Camp Shemesh as well as guidance from American Academy of Pediatrics, the CDC, the Shelby County Department of Health, LeBonheur President's Council and medical experts from in and out of Memphis, including Dr. Sandy Arnold (Infectious Disease Pediatrician, LeBonheur). We have consulted heavily with members of the Memphis Association of Independent Schools (MAIS). Rabbi Owen held a virtual town hall in late June to discuss the status of our planning process and to address concerns and questions. We have consulted with our Rabbinic Oversight Committee and have also received feedback from our faculty.

We intend to begin the school year with all students on campus and we plan to follow our current 2020-2021 school calendar. However, depending on guidance and the level of community spread, we may consider different formats for different grades. Current guidance shows that younger students (under 10 years of age) do not spread the COVID-19 virus as well as adults and that the risk of spread is therefore lower in the lower grades from child to child and child to adult. We also saw greater educational success in our older grades than in our younger grades during our experience with virtual learning last school year. Therefore, even if we shift to virtual learning for the older students, we will be more likely to maintain in-person learning for the lower grades.

Foundation #2:

Enforcing mandatory on-campus safeguards to promote the health of the students, faculty, and staff and their families.

FOUNDATION #2:

The effectiveness of our reopening depends on clear guidelines and consistent and universal compliance. When you enter the school campus, you must agree, as a family, to follow our protocols. Staff will be trained and prepared to operate under these new guidelines beginning on the first day of school and students will be trained during the first days of school.



HEALTH SCREENINGS

Each person who enters the building must be screened for COVID-19 related issues.

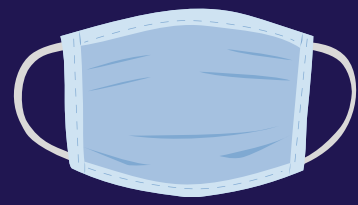
- A designated staff member will approach each car at morning carpool through the car window or while students are in a distanced line for a health screening and temperature check (must be 99.9 degrees or under).
- Parents and/or students will answer a series of health questions about their students/themselves.
- All visitors must be screened.
- Each parent, student and faculty member must accurately report daily health information.



ILLNESS AND PREVENTION

Students and faculty who exhibit symptoms of illness must stay home

- Spaces will be available to isolate students who become ill.
- A parent must pick up ill children within 30 minutes of being notified.
- All faculty and students are strongly encouraged to receive a flu vaccination.
- If anyone in a student's family has a general fever or other unexplained signs of infection, this student must not come to school until that family member has either tested negative for COVID-19 or has a doctor's note explaining his/her symptoms.
- High-risk symptoms for COVID (those that are common and relatively specific for COVID) include: fever cough shortness of breath/increased work of breathing loss of sense of taste or smell.



FACE COVERINGS

Faculty will wear face coverings at all times in the presence of other people. Students in all grades will wear face coverings at all times except during supervised breaks and meals.

- Supervised distanced recess will not require masks but will be monitored and scheduled in cohorts.
- Students under 10 years old with a documented medical exemption will not have to wear a mask when exempted.
- Face coverings must be double-layered or be capable of providing a comparable level of coverage (including two single-layer). Clear masks with an ASTM Level 3 rating are acceptable.
- A face shield may be worn in conjunction with a mask but a face shield does not replace a mask.



HANDWASHING AND PERSONAL SANITIZING

Handwashing or hand sanitizer schedules will be followed in all classrooms

- Students and faculty will wash hands frequently
- Over 50 sanitizing stations are located throughout the campus.
- Students' belongings will be kept separately and stored individually (in lockers or otherwise).
- Students should not touch other students' belongings.
- We will aim to limit technology sharing and will regularly disinfect all shared technologies.



CLEANING AND SANITATION

Increased cleaning and sanitizing procedures during and after school hours.

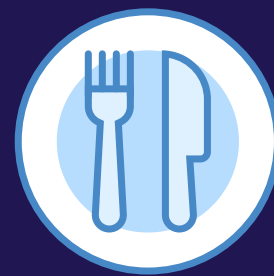
- All classrooms, desks, doorknobs, light switches, restrooms and other frequently-touched objects will be cleaned and sanitized multiple times per day with an approved disinfectant.
- We have hired an additional employee whose primary duty is to sanitize throughout the school during the day.
- At each class change, all surfaces will be wiped down with approved disinfectant.
- Water fountains will not be available for use. The water bottle refilling station will be accessible and will be sanitized regularly. End of day cleaning will include an outside professional cleaning company cleaning all contact surfaces wiped down with approved disinfectant.



SOCIAL DISTANCING: CONTROLLING VIRAL SPREAD

Reconfigured classrooms to allow six feet of distancing and restricted use of common areas

- Social distancing will be maintained during tefila. Tefila will be conducted only with the members of one cohort.
- Common areas will have designated points of entry and exit with increased capacity limits.
- Traffic within buildings will be minimized.
- We will endeavor to use more outdoor learning spaces.
- The HVAC system has been maximized to decrease the spread of the virus



SERVING AND EATING MEALS SAFELY

Revamped breakfast and lunch procedures

- Breakfast will be served to the Junior High and High School students.
- Hot lunches will be available for purchase for all students.
- Meals will be eaten only in designated, socially distant spaces.
- All food and utensils will be picked up in the socially distanced lunch line only.
- We will create additional eating areas such as outdoor tables when the weather permits.



ESSENTIAL SERVICES AND PEOPLE ONLY

All non-educational and/or non-essential events and visits are postponed or redesigned to be online

- Parents and guests are admitted into school buildings by appointment only.
- Visits should be limited to necessary visits.
- We are not gathering groups of parents or guests on campus until further notice.
- No off-site field trips or group transportation will be offered.
- Aftercare will be available for all students starting on the first full day of school.



TRAVEL FROM OUTSIDE OF MEMPHIS

**TRAVEL FROM A SITUATION OF
COMMUNITY SPREAD OR LIMITED SOCIAL
DISTANCING CREATES RISK OF SPREAD TO
MEMPHIS.**

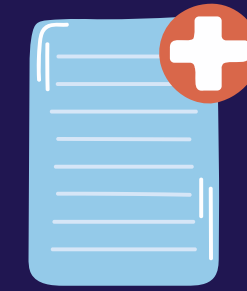
- A faculty member or student who travels out of Memphis must implement at least two of the three main controls - mask wearing, social distancing and being outside - at all times when in the presence of a person who does not live in his or her home. Indoor meals in the presence of those who do not live in one's home in Memphis should be avoided.
- In places of increased viral spread (As of November 2020 - those sections of Brooklyn, Queens, Five Towns (NY), Rockland and Orange Counties (NY), Lakewood (NJ), Baltimore and Israel that have been labelled by the government as having elevated spread), a faculty or student must implement all three controls at all times when in the presence of a person who does not live in his or her home.
- Faculty members and students who travel must affirm that they have kept to the standards during travel by completing the Travel and Vacation Questionnaire. A faculty member or student who has not kept to these standards should stay home from school for 14 days upon arrival to Memphis OR for 7 days if he or she has tested negative after seven days of landing in Memphis.

Foundation #3:

MHA-FYOS will work to support each of our students, educationally and socio-emotionally, as needed. This support will include virtual education to those students who need to learn from home because of exposure to COVID-19 or because of concern for exposure.

FOUNDATION #3:

MHA-FYOS will educate your child virtually if you keep him or her at home, whether it is for health, safety or other reasons. In most grades, we will have a live feed of the classroom that students through which students will be able to connect to the class and the lesson. For other grades, we will offer educational resources to help keep the student current. We will strive to support your child if he or she must be home because of sickness or exposure and/or as you determine what conditions you need before sending your child back to campus.



TESTING POSITIVE FOR COVID-19

A student or staff member that tested positive for COVID-19 will be excluded from school and will be able to return to school based on the symptom-based strategy as described by the CDC:

- If at least one day has passed since recovery from the symptoms of COVID and at least 14 days have passed since symptoms first appeared, the student may return to school.
- Recovery from symptoms includes being fever free without taking fever reducing medications and improvement in all other symptoms. The family doctor should write a letter stating that in his or her opinion it is safe for the student to return to school.
- If the student or faculty member was hospitalized, he or she may need to be excluded from school for a longer period of time.
- Depending on the availability of testing within Memphis, we may additionally allow for a return to school based on the Test Based strategy. If after recovery from the symptoms of COVID the student has tested negative on two COVID-19 tests spaced at least one day apart and furnished the results to the office, the student may return to school.

FOUNDATION #3:

EXPOSURE TO A POSITIVE CASE: A MEMBER OF THE STUDENT'S FAMILY TESTS POSITIVE

Any student whose parent, sibling, or anyone else living in their house tests positive will not be permitted to attend school in person until a minimum of 14 days have passed symptom-free.

EXPOSURE TO A POSITIVE CASE: A MEMBER OF THE STUDENT'S COHORT TESTS POSITIVE

Classes will be organized to limit the number of students to which each student is exposed. Each of these groupings is called a cohort.

- If one member of a cohort tests positive, the school will investigate the extent to which the student or faculty member was in contact with other students and faculty. Depending on the extent of contact, other students and faculty may be excluded for up to a minimum of 14 days.
- In general, the standard of contact that the school will use to determine the need for exclusion is:
 - Fourth grade and below: Exposure to a Covid-19 positive case within 6 feet for 15 consecutive minutes when one or both was not wearing a mask
 - Fifth grade and up: Exposure to a covid-19 positive case within 6 feet for 15 consecutive minutes.

COMMUNICATION PLAN



If one member of a cohort tests positive, the parents of students in that cohort will be emailed immediately the following message: a student within your child's cohort has tested positive for COVID-19. The message will detail any specific instructions and guidance, based on the situation. Teachers of that cohort will also be notified.



In accordance with applicable halachic, legal, and ethical standards, the school will cooperate with local, state and federal government bodies and, in the interest of public health, will release the names of positive tests and contacts as appropriate.

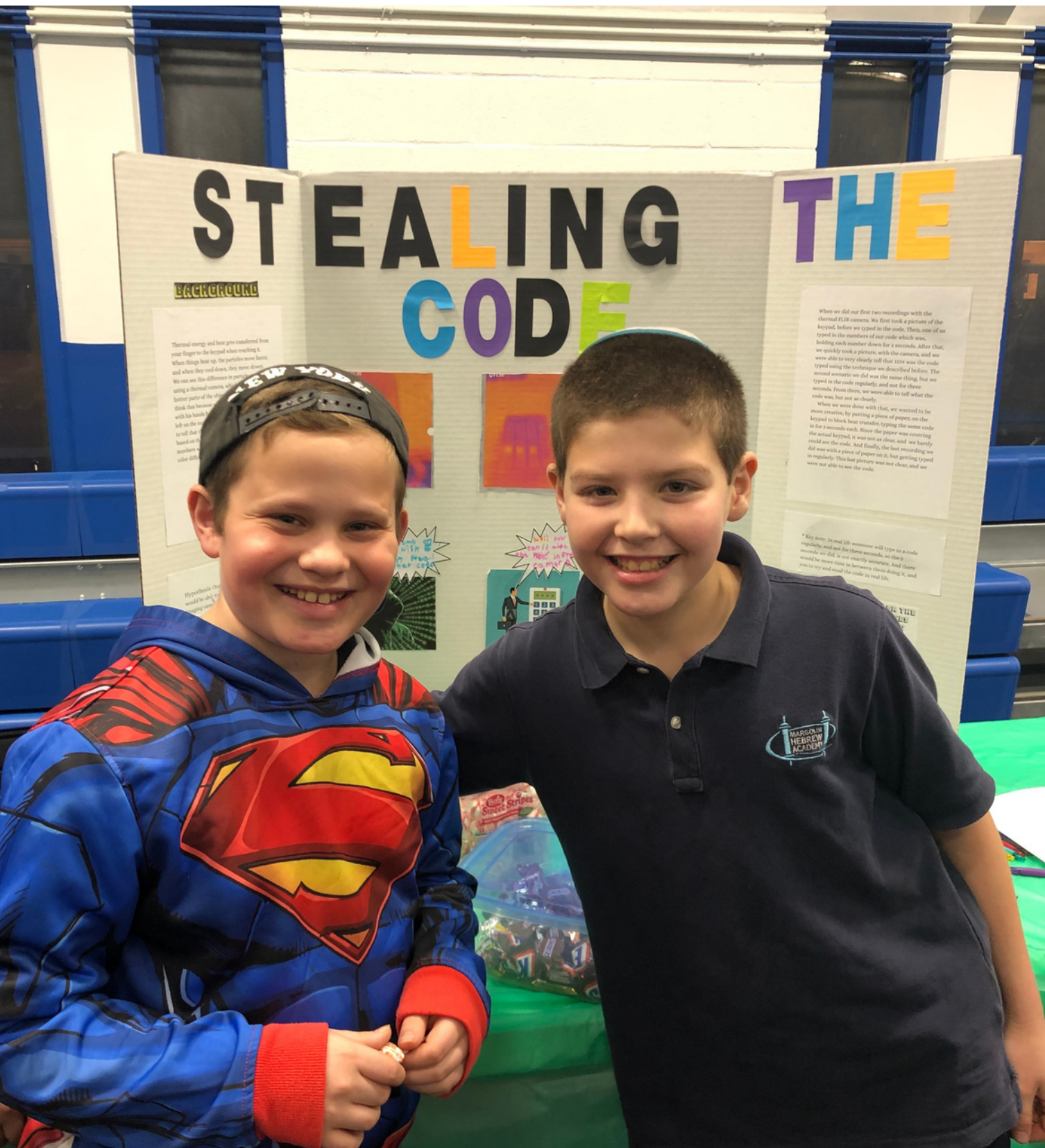


Soon after this message is sent, the entire parent body and faculty will be notified that someone has tested positive within the school community. That message will also detail any specific instructions and guidance.



In the interest of protection of life, families are encouraged to publicly share information about positive tests of COVID-19 within their immediate family.

COVID-19 RESOURCES



Centers for Disease Control and Prevention (CDC):

[CDC Guidance on Face Coverings](#)

[CDC Guidance on Hand Hygiene](#)

[CDC Considerations for Schools](#)

Tennessee Department of Education:

[TN Department of Education Reopening Guide](#)

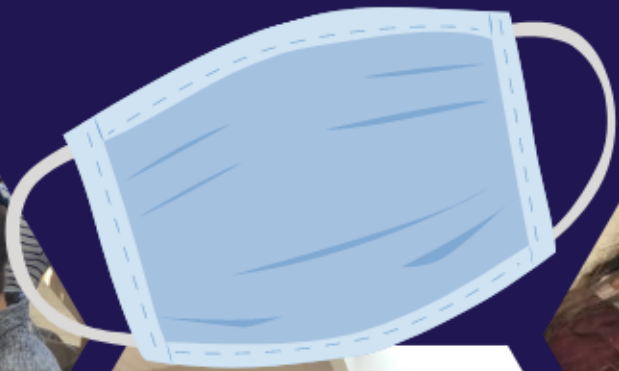
Tennessee Department of Health:

[TN Department of Health Recommendations for the Management of Covid-19 in Schools](#)

Lebonheur Children's Hospital:

[Lebonheur Coronavirus Resource Center](#)

All Jewish People are Responsible
for Each Other



כל ישראל ערבין זה לזה



We are looking forward to a wonderful school year!

If you have any questions or concerns, please contact Rabbi Owen at benjy.owen@mhafyos.org